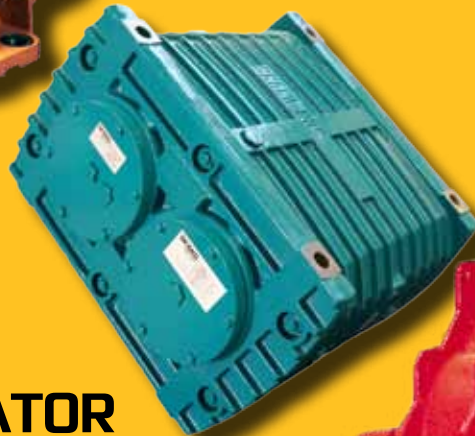
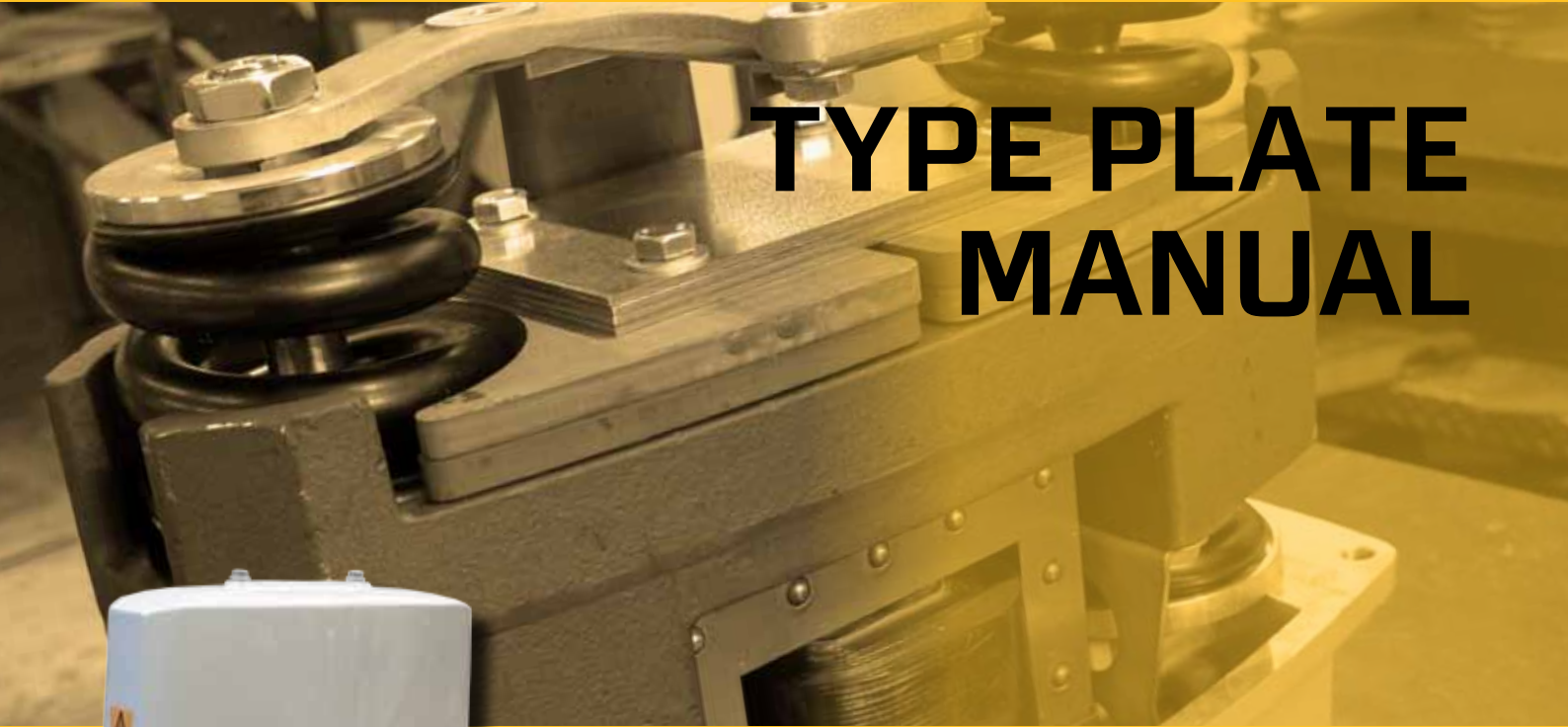


SKAKO

VIBRATION

TYPE PLATE **MANUAL**



ELECTRO MAGNETIC VIBRATOR
UNBALANCED MOTOR
MECHANICAL DRIVE
EXCITER

Type plate for electromagnetic vibrator

For spare parts, service etc. please forward from the type plate.



Placement of type plate

SKAKO VIBRATION www.skako.com	<input type="text"/>	Type
	<input type="text"/>	No.
	<input type="text"/>	V
	<input type="text"/>	A
	<input type="text"/>	Hz
	<input type="text"/>	Item no.

- _____ Type
- _____ Serial number
- _____ Voltage between vibrator and controls
- _____ Amp. consumption vib.
- _____ Frequency vibrator
- _____ Article number

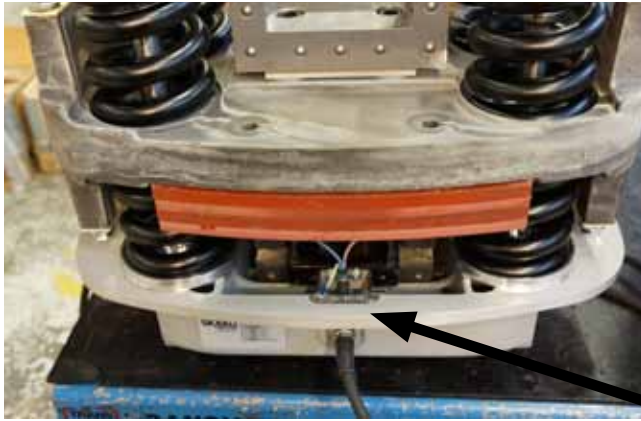
Example old type plate



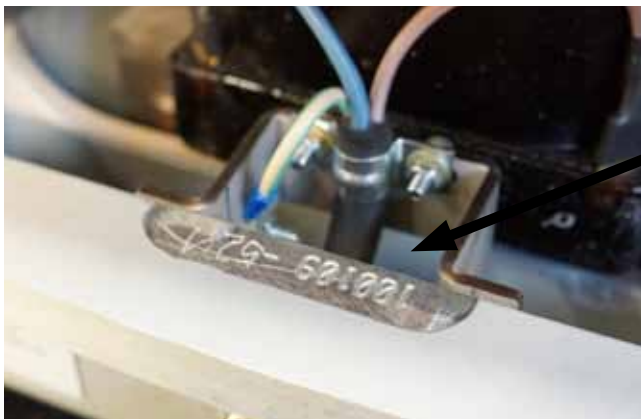
SKAKO 19.12.2014

Type plate for electromagnetic vibrator

If the type plate is missing, inform us the serial number



Should the type plate be missing, you will find the the serial number either milled or chopped on the base plate as shown or inside as shown on the next picture.



Serial number

Type plate for motor vibrator

For spare parts, service etc. please forward data from the type plate.



Placement of type plate

LR 100948	SKAKO VIBRATION	0518434
		ГБ04
IEC Ex N° CES 09.0001X	ExtD A21 IP66 T	°C
CE 0722 Ex I 2D LCIE05ATEX6163X		
TYPE <input type="text"/>	SERIE <input type="text"/>	
CENT.FORCE kN <input type="text"/>	RPM <input type="text"/>	Hz <input type="text"/>
VOLT <input type="text"/>	AMP. <input type="text"/>	
PH. <input type="text"/>	KWin. <input type="text"/>	KWout <input type="text"/>
	INS.CL. F	
COS φ <input type="text"/>	DUTY S1	CONN. <input type="text"/>
	CAP. <input type="text"/>	μF <input type="text"/>
PROT. <input type="text"/>	MAX. AMB. <input type="text"/>	°C S.No. <input type="text"/>
MAY BE USED WITH PWM INVERTER -CT- 20HZ TO BASE FREQUENCY CAUTION: USE SUPPLY WIRE SUITABLE FOR 120°C		

- _____ Type
- _____ Serie
- _____ Hz
- _____ Volt
- _____ Serial number

Type plate for mechanical drive

For spare parts, service etc. please forward data from the type plate.



Placement of type plate

SKAKO VIBRATION www.skako.com	<input type="text"/>	Type
	<input type="text"/>	No.
	<input type="text"/>	V
	<input type="text"/>	A
	<input type="text"/>	Hz
	<input type="text"/>	Item no.

- _____ Type
- _____ Serial number
- _____ Voltage between vibrator and controls
- _____ Amp. consumption vib.
- _____ Frequency vibrator
- _____ Article number

Type plate for mechanical drive

If the type plate is missing, inform us the serial number



Should the type plate be missing, you will find the the serial number milled or chopped on the base plate as shown or inside as shown on the next picture.



Serial number